

SINAN ELECTRIC CO., LTD.



SAFETY

Emergency Lighting and Exit Signs

UL®
SA®
ISO 9002

SINAN ELECTRIC CO., LTD.
P.O. Box 541, Taichung, Taiwan Tel: 886-4-2228-4171
Fax: 886-4-2227-7789, 886-4-2228-4175 E-MAIL: SINAN@ms15.hinet.net

Sinan Electric Co., Ltd.

Taiwan Head Office

Tel: 886-4-2228-4171

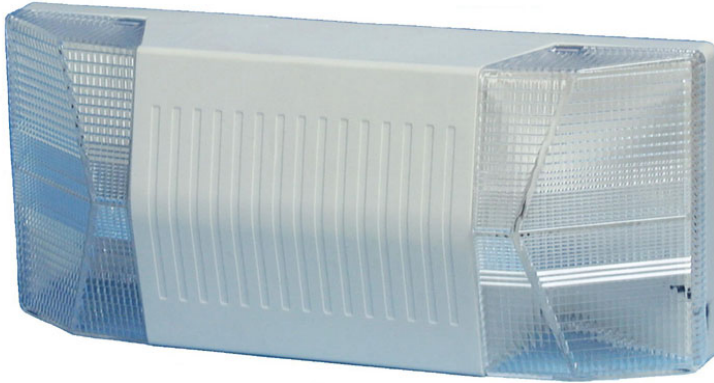
Fax: 886-4-2228-4175

Email: sales@sinanelectric.com

SINAN

SE-80

Emergency Light
Thermoplastic Housing
Fixed Heads



DESCRIPTION

The SE-80 is an attractive, economical alternative to traditional double headed emergency lighting fixtures. It has an aesthetically appealing low profile and is quick and simple to install.

APPLICATION

Suitable for use in almost any commercial or light industrial application.

OPTIONS

UL damp location listing. Add "D" to end of catalog number.
Halogen lamps, 5W, 6V JC bipin.
Add "H" to end of catalog number.

APPROVALS

UL924.
UL listed for damp locations.
Life Safety NFPA 101.

HOUSING

The housing is made of injection molded thermoplastic. It has high impact resistance and is UL94-5V rated.

MOUNTING

The back mounting plate is made of injection molded thermoplastic. It has a molded in universal J-Box mounting pattern and keyhole slots. The main housing snaps on to the back plate for quick and easy installation.

LENS

Computer designed optical prisms throw the light outward and to the sides for maximum utilization.

ELECTRICAL/BATTERY

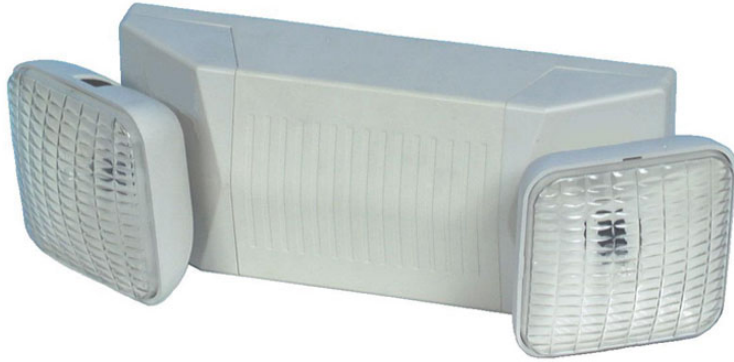
- Dual voltage input 120/277 VAC, 60 Hz.
- Maintenance free, Sealed Lead Calcium 6V, 4.2 AH battery with a maximum full recharge time of 48 hours. Minimum 1 ½ hour emergency operation.
- Low voltage disconnect of the battery prevents deep discharge and maintains good battery life.
- Fully automatic, solid state charger.
- Test switch with LED charge indicator/AC voltage indicator.
- Line latching feature prevents the unit from turning on during installation to a non-energized AC circuit. Saves labor since the installer does not have to return to connect the battery terminals once the building is energized.

Catalog Number	Heads	Lamp Type	Lamp V DC	Lamp Watts	Weight (Lbs)	Volume (cu. ft.)	Pieces Per Skid	Pieces Per 20'	Pieces Per 40'
SE-80	Fixed Heads	T-5 Incan.	6	2 x 5.4	3.4	0.13	504	5040	10080
SE-80L	Round Heads	T-5 Incan.	6	2 x 5.4	4.2	0.30	210	2100	4200
SE-80Q	Square Heads	T-5 Incan.	6	2 x 5.4	4.3	0.27	252	2520	5040

SINAN

SE-90

Emergency Light
Thermoplastic Housing
Square Heads



DESCRIPTION

The SE-90 is an attractive, emergency lighting unit with soft rounded corners and adjustable square heads.

APPLICATION

Suitable for use in almost any commercial or light industrial application.

OPTIONS

UL damp location listing. Add "D" to end of catalog number.
Halogen lamps, 5W, 6V JC bipin.
Add "H" to end of catalog number.

APPROVALS

UL924.
UL listed for damp locations.
Life Safety NFPA 101.

HOUSING

The housing is made of injection molded thermoplastic. It has high impact resistance and is UL94-5V rated.

MOUNTING

The back mounting plate is made of injection molded thermoplastic. It has a molded in universal J-Box mounting pattern and keyhole slots. The main housing snaps on to the back plate for quick and easy installation.

HEADS

Two attractive square shaped heads with rounded corners are adjustable allowing the end user to direct the light where it will be most useful.

ELECTRICAL/BATTERY

- Dual voltage input 120/277 VAC, 60 Hz.
- Maintenance free, Sealed Lead Calcium 6V, 4.2 AH battery with a maximum full recharge time of 48 hours. Minimum 1 ½ hour emergency operation.
- Low voltage disconnect of the battery prevents deep discharge and maintains good battery life.
- Fully automatic, solid state charger.
- Test switch with LED charge indicator/AC voltage indicator.
- Line Latching feature prevents the unit from turning on during installation to a non-energized AC circuit. Saves labor since the installer does not have to return to connect the battery terminals once the building is energized.

Catalog Number	Heads	Lamp Type	Lamp V DC	Lamp Watts	Weight (Lbs)	Volume (cu. ft.)	Pieces Per Skid	Pieces Per 20'	Pieces Per 40'
SE-90	Square Heads	T-5 Incan.	6	2 x 5.4	4.4	0.31	240	2400	4800

SINAN

SE-40

Emergency Light
Thermoplastic Housing
Round Heads



DESCRIPTION

The SE-40 is an economical, double headed emergency lighting fixtures. It has an aesthetically appealing low profile and is quick and simple to install.

APPLICATION

Suitable for use in almost any commercial or light industrial application.

OPTIONS

UL damp location listing. Add "D" to end of catalog number.
Halogen lamps, 5W, 6V JC bipin.
Add "H" to end of catalog number.

APPROVALS

UL924.
UL listed for damp locations.
Life Safety NFPA 101.

HOUSING

The housing is made of injection molded thermoplastic. It has high impact resistance and is UL94-5V rated.

MOUNTING

The back mounting plate is made of injection molded thermoplastic. It has a molded in universal J-Box mounting pattern and keyhole slots. The main housing snaps on to the back plate for quick and easy installation.

LENS

Computer designed optical prisms throw the light outward and to the sides for maximum utilization.

ELECTRICAL/BATTERY

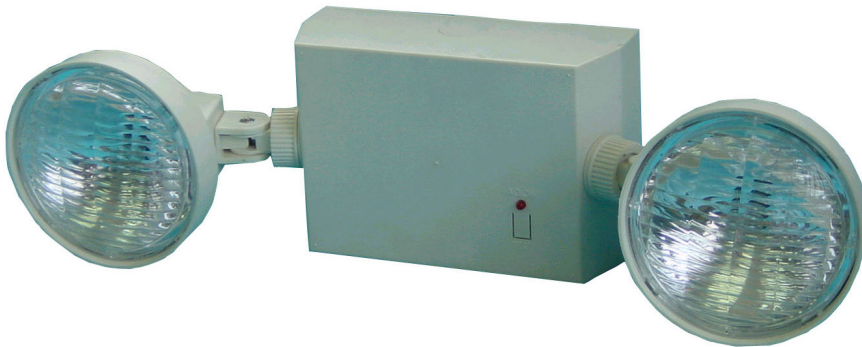
- Dual voltage input 120/277 VAC, 60 Hz.
- Maintenance free, Sealed Lead Calcium 6V, 4.2 AH battery with a maximum full recharge time of 48 hours. Minimum 1 ½ hour emergency operation.
- Low voltage disconnect of the battery prevents deep discharge and maintains good battery life.
- Fully automatic, solid state charger.
- Test switch with LED charge indicator/AC voltage indicator.
- Line latching feature prevents the unit from turning on during installation to a non-energized AC circuit. Saves labor since the installer does not have to return to connect the battery terminals once the building is energized.

Catalog Number	Heads	Lamp Type	Lamp V DC	Lamp Watts	Weight (Lbs)	Volume (cu. ft.)	Pieces Per Skid	Pieces Per 20'	Pieces Per 40'
SE-40L	Round Heads	T-5 Incan.	6	2 x 5.4	4.0	0.26	240	2400	4800
SE-40Q	Square Heads	T-5 Incan.	6	2 x 5.4	3.8	0.23	300	3000	6000

SINAN

SE-264

Emergency Light
Thermoplastic Housing
Round Heads



DESCRIPTION

The SE-264 is an economical, double headed emergency lighting fixtures. It has an aesthetically appealing low profile and is quick and simple to install.

APPLICATION

Suitable for use in almost any commercial or light industrial application.

OPTIONS

UL damp location listing. Add "D" to end of catalog number.

Halogen lamps, 5W, 6V JC bipin. Add "H" to end of catalog number.

APPROVALS

UL924.

UL listed for damp locations.
Life Safety NFPA 101.

HOUSING

The housing is made of injection molded thermoplastic. It has high impact resistance and is UL94-5V rated.

MOUNTING

The back mounting plate is made of injection molded thermoplastic. It has a molded in universal J-Box mounting pattern and keyhole slots. The main housing snaps on to the back plate for quick and easy installation.

LENS

Computer designed optical prisms throw the light outward and to the sides for maximum utilization.

ELECTRICAL/BATTERY

- Dual voltage input 120/277 VAC, 60 Hz.
- Maintenance free, Sealed Lead Calcium 6V, 4.2 AH battery with a maximum full recharge time of 48 hours. Minimum 1 ½ hour emergency operation.
- Low voltage disconnect of the battery prevents deep discharge and maintains good battery life.
- Fully automatic, solid state charger.
- Test switch with LED charge indicator/AC voltage indicator.
- Line latching feature prevents the unit from turning on during installation to a non-energized AC circuit. Saves labor since the installer does not have to return to connect the battery terminals once the building is energized.

Catalog Number	Heads	Lamp Type	Lamp V DC	Lamp Watts	Weight (Lbs)	Volume (cu. ft.)	Pieces Per Skid	Pieces Per 20'	Pieces Per 40'
SE-264L	Round Heads	T-5 Incan.	6	2 x 5.4	4.0	0.23	288	2880	5760
SE-264Q	Square Heads	T-5 Incan.	6	2 x 5.4	3.8	0.16	420	4220	8440

SINAN

SE-100

EXIT Sign
Thermoplastic Housing
Self Powered
LED Lamps



DESCRIPTION

The SE-100R (LED Red) and SE-100G (LED Green) are economical and energy saving Exit signs. The injection molded plastic housing has soft rounded corners for aesthetic appeal. The LED lamps provide a maximum of energy savings potential and the battery pack allows the unit to be Self Powered during power outages.

APPLICATION

Suitable for use in almost any commercial or light industrial application.

APPROVALS

UL924.
UL listed for damp locations.
Life Safety NFPA 101.

HOUSING

The housing is made of injection molded thermoplastic making it impact resistant and corrosion proof. UL94-5V rated.

MOUNTING

Easy snap fit canopy can be used for top or end mounting or knockouts can be used for surface mounting. Included second face allows the unit to be used as a single or double face exit sign. Snap fitting, replaceable chevrons for direction indication.

LAMPS

Long life Light Emitting Diode (LED) lamps provide the maximum in energy savings.

ELECTRICAL/BATTERY

- Dual voltage input 120/277 VAC, 60 Hz.
- Maintenance free, Sealed Nickel Cadmium battery provides a minimum 1 ½ hour emergency operation.
- Low voltage disconnect of the battery prevents deep discharge and maintains good battery life.
- Fully automatic, solid state charger.
- Test switch with LED charge indicator/AC voltage indicator.

Catalog Number	Emergency	Lamp Type	Input Power 120V	Input Power 277V	Weight (Lbs)	Volume (cu. ft.)	Pieces Per Skid	Pieces Per 20'	Pieces Per 40'
SE-100R	Self Powered	LED Red	3.0 W	3.0 W	2.9	0.24	294	2940	5880
SE-100R-AC	AC Only	LED Red	3.0 W	3.0 W	2.8	0.24	294	2940	5880
SE-100G	Self Powered	LED Green	2.8 W	2.8 W	2.9	0.24	294	2940	5880
SE-100G-AC	AC Only	LED Green	2.8 W	2.8 W	2.8	0.24	294	2940	5880

SINAN

SE-100R-2H

EXIT Sign + 2 Heads
Thermoplastic Housing
Self Powered



DESCRIPTION

The SE-100R-2H (LED Red) and SE-100G-2H (LED Green) are economical and energy saving Exit signs with two, top mounted emergency lighting heads. The injection molded plastic housing has soft rounded corners for aesthetic appeal. The Exit signs' LED lamps provide a maximum of energy savings potential and the battery pack allows the unit to be Self Powered during power outages.

APPLICATION

Suitable for use in almost any commercial or light industrial application.

OPTIONS

Halogen lamps, 5W, 6V JC bipin.
Add "H" to end of catalog number.

APPROVALS

UL924.
UL listed for damp locations.
Life Safety NFPA 101.

HOUSING

The housing is made of injection molded thermoplastic making it impact resistant and corrosion proof. UL94-5V rated.

MOUNTING

Easy snap fit canopy can be used for end mounting or knockouts can be used for surface mounting. Included second face allows the unit to be used as a single or double face exit sign. Snap fitting, replaceable chevrons for direction indication.

LAMPS

Long life Light Emitting Diode (LED) lamps in the Exit sign portion provide the maximum in energy savings. The emergency lighting heads have 2 x 5.4 W incandescent lamps.

ELECTRICAL/BATTERY

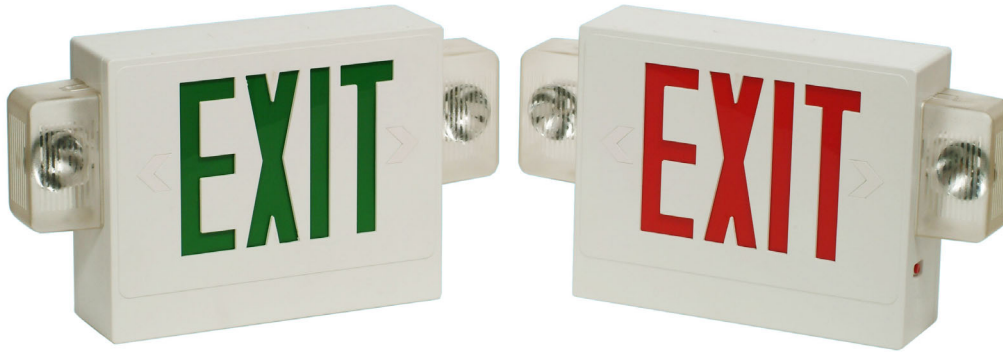
- Dual voltage input 120/277 VAC, 60 Hz.
- Maintenance free, Sealed Lead Calcium 6V, 4.5 AH battery with a maximum full recharge time of 48 hours. Minimum 1 ½ hour emergency operation.
- Low voltage disconnect of the battery prevents deep discharge and maintains good battery life.
- Fully automatic, solid state charger.
- Test switch with LED charge indicator/AC voltage indicator.
- Line latching feature prevents the unit from turning on during installation to a non-energized AC circuit. Saves labor since the installer does not have to return to connect the battery terminals once the building is energized.

Catalog Number	Emergency	Lamp Type EXIT Section	Lamp Type Emergency Section	Weight (Lbs)	Volume (cu. ft.)	Pieces Per Skid	Pieces Per 20'	Pieces Per 40'
SE-100R-2H	Self Powered	LED Red	2 x 5.4 W Incan.	6.8	0.78	100	1000	2000
SE-100G-2H	Self Powered	LED Green	2 x 5.4 W Incan.	6.8	0.78	100	1000	2000

SINAN

SE-100R-2S

**EXIT Sign + 2 Side
Heads**
Thermoplastic Housing
Self Powered



DESCRIPTION

The SE-100R-2S (LED Red) and SE-100G-2S (LED Green) are economical and energy saving Exit signs with two, side mounted emergency lighting heads. The injection molded plastic housing has soft rounded corners for aesthetic appeal. The Exit signs' LED lamps provide a maximum of energy savings potential and the battery pack allows the unit to be Self Powered during power outages.

APPLICATION

Suitable for use in almost any commercial or light industrial application. Ideal for mounting in the limited space available above doorways.

OPTIONS

Remote Heads Option. At the end of the catalog number add "R" for one remote head and "R2" for two remote head capability.

APPROVALS

UL924.
UL listed for damp locations.
Life Safety NFPA 101.

HOUSING

The housing is made of injection molded thermoplastic making it impact resistant and corrosion proof. UL94-5V rated.

MOUNTING

Easy snap fit canopy can be used for top mounting or knockouts can be used for surface mounting. Included second face allows the unit to be used as a single or double face exit sign. Snap fitting, replaceable chevrons for direction indication.

LAMPS

Long life Light Emitting Diode (LED) lamps in the Exit sign portion provide the maximum in energy savings. The emergency lighting heads have 2 x 5.4 W incandescent lamps.

ELECTRICAL/BATTERY

- Dual voltage input 120/277 VAC, 60 Hz.
- Maintenance free, Sealed Lead Calcium 6V, 4.5 AH battery with a maximum full recharge time of 48 hours. Minimum 1 ½ hour emergency operation.
- Low voltage disconnect of the battery prevents deep discharge and maintains good battery life.
- Fully automatic, solid state charger.
- Test switch with LED charge indicator/AC voltage indicator.
- Line latching feature prevents the unit from turning on during installation to a non-energized AC circuit. Saves labor since the installer does not have to return to connect the battery terminals once the building is energized.

Catalog Number	Emergency	Lamp Type EXIT Section	Lamp Type Emergency Section	Weight (Lbs)	Volume (cu. ft.)	Pieces Per Skid	Pieces Per 20'	Pieces Per 40'
SE-100R-2S	Self Powered	LED Red	2 x 5.4 W Incan.	7.0	0.50	128	1280	2560
SE-100G-2S	Self Powered	LED Green	2 x 5.4 W Incan.	7.0	0.50	128	1280	2560



SE-RH36MP

SE-RH36

- Remote Head PAR 36 for maximum 9 W lamps
- Polycarbonate housing, polycarbonate lens, metalized reflector
- Option – Halogen lamps 5W, 6V JC bipin, metal reflector (consult factory)
- Option – 18W, 6V and 18W, 12V versions with glass lens and metal reflector (consult factory)

Catalog Number	Description
SE-RH36	Remote Head PAR 36
SE-RH36H	Remote Head PAR 36 Halogen 5W, 6V JC bipin
SE-RH36MP	One Remote Head PAR 36 with a mounting plate in a box
SE-RH36MP2	Two Remote Head PAR 36 with a mounting plate in a box



SE-RH18MP

SE-RH18

- Remote Head PAR 18 for maximum 9 W lamps
- Polycarbonate housing, polycarbonate lens, metalized reflector
- Option – Halogen lamps 5W, 6V JC bipin, metal reflector (consult factory)
- Option – 18W, 6V and 18W, 12V versions with glass lens and metal reflector (consult factory)

Catalog Number	Description
SE-RH18	Remote Head PAR 18
SE-RH18H	Remote Head PAR 18 Halogen 5W, 6V JC bipin
SE-RH18MP	One Remote Head PAR 18 with a mounting plate in a box
SE-RH18MP2	Two Remote Head PAR 18 with a mounting plate in a box

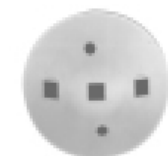


SE-RHQMP

SE-RHQ

- Remote Head Square for maximum 9 W lamps
- Polycarbonate housing, polycarbonate lens, metalized reflector
- Option – Halogen lamps 5W, 6V JC bipin, metal reflector (consult factory)

Catalog Number	Description
SE-RHQ	Remote Head Square
SE-RHQH	Remote Head Square 18 Halogen 5W, 6V JC bipin
SE-RHQMP	One Remote Head Square with a mounting plate in a box
SE-RHQMP2	Two Remote Head Square with a mounting plate in a box



SE-RHMP

SE-RHMP

- Remote Head Mounting Plate for one or two remote heads
- Polycarbonate

Catalog Number	Description
SE-RHMP	Mounting Plate for one or two remote heads